



Unit 15 Market Walk, Tiverton, EX16 6BL
£25,000 Per Annum

A fantastic opportunity to let a versatile commercial unit featuring a spacious shop floor and four well-proportioned offices located in a great part of Tiverton!

- Large Shop Floor
- Long Term Rental
- Four Offices on the First Floor
- Kitchen

Description

A generously sized commercial unit available to rent in a prime town-centre location.

The property offers a substantial ground-floor shop area, providing excellent visibility and versatile retail or office space. The first floor features four spacious offices, complemented by a modern kitchen and separate WC facilities.

General Conditions Lettings

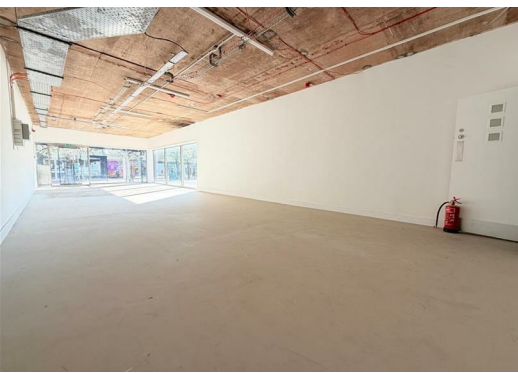
Upon application we require one weeks rent as a holding fee. This will then be held up to 90 days or until the move in occurs and the money will be used to deduct from the first month's rent. Terms and conditions apply.

Lettings Enquiries

If you have any enquiries, please do not hesitate to contact the office on 01884 257997 or email us at lettings@weldenedwards.co.uk.

Disclaimer

Whilst every attempt has been made to ensure our sales particulars are accurate and reliable, they are only a general guide to the property, and accordingly, if there is any point which is of particular importance to you, please contact the office and we will be pleased to clarify the position for you.







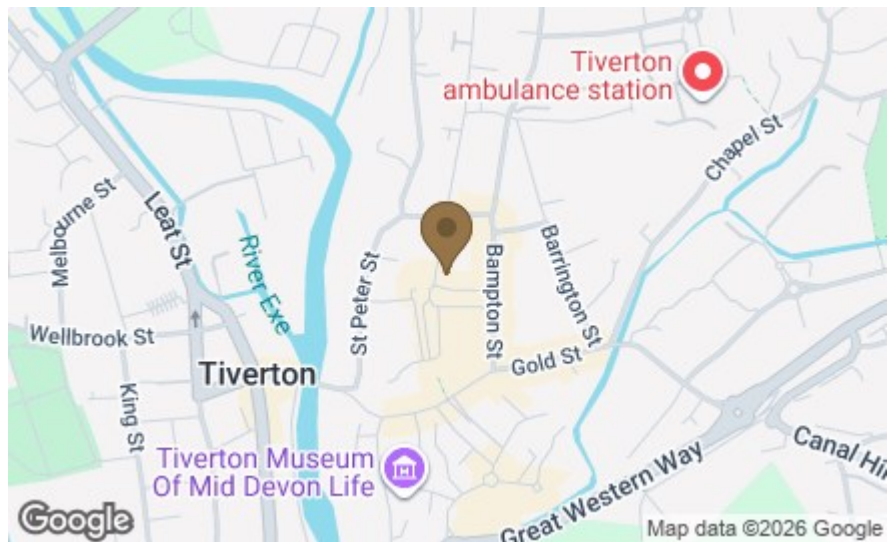
Total area: approx. 206.1 sq. metres (2218.7 sq. feet)

This plan is for guidance only and is not to be relied upon.
Measurements are approximate.
Plan produced using PlanUp.

Welden
Edwards
Supporting your every move

| Energy Efficiency Rating | | Current | Potential |
|---|-------------------------|---------|-----------|
| Very energy efficient - lower running costs | | | |
| (92 plus) A | | | |
| (81-91) B | | | |
| (69-80) C | | | |
| (55-68) D | | | |
| (39-54) E | | | |
| (21-38) F | | | |
| (1-20) G | | | |
| Not energy efficient - higher running costs | | | |
| England & Wales | | 65 | |
| | EU Directive 2002/91/EC | | |

| Environmental Impact (CO ₂) Rating | | Current | Potential |
|---|-------------------------|---------|-----------|
| Very environmentally friendly - lower CO ₂ emissions | | | |
| (92 plus) A | | | |
| (81-91) B | | | |
| (69-80) C | | | |
| (55-68) D | | | |
| (39-54) E | | | |
| (21-38) F | | | |
| (1-20) G | | | |
| Not environmentally friendly - higher CO ₂ emissions | | | |
| England & Wales | | | |
| | EU Directive 2002/91/EC | | |



53 Bampton Street, Tiverton, Devon, EX16 6AL
Tel: 01884 257 997
sales@weldenedwards.co.uk

Welden
Edwards
Supporting your every move